

Daikin R35DB7V1

Specifications

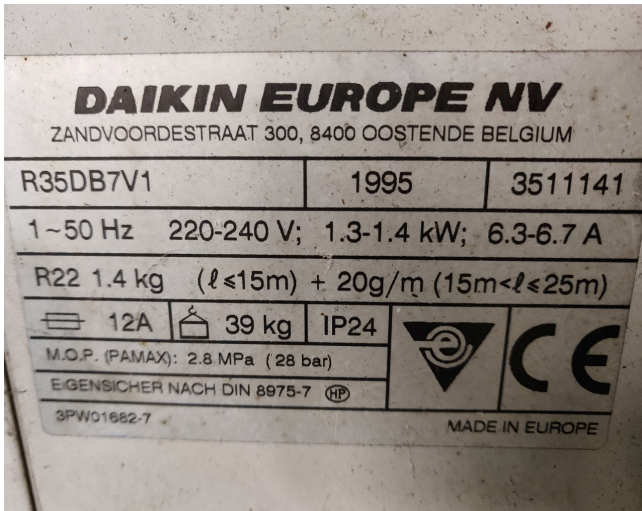
Brand	Daikin
Tipo	R35DB7V1
Product type	Air Cooled Chiller (split-unit)
Capacidad kW	3,8
Refrigerante	Freon
Tipo de Refrigerante	R22
Peso kg.	39 kg
Remarks	YOB 1995
Stock	1



Description

Used Daikin R35DB7V1

Used air conditioner wall mounted split unit build by Daikin type R35DB7V1.
*Why choose for HOSBV? Were not only the largest used refrigeration specialist in Europe, but also, we deliver all equipment including an extensive test, warranty and industrial cleaning.
*Optional we can also perform a new paint job and arrange the logistics.



R35GZV11 + FHC35BZV1
Cooling capacity

230V [50Hz]

Indoor		Outdoor temperature (°C)																	
EWB	EDB	20				25				32				40					
		TC	SHC	PI	TC	SHC	PI	TC	SHC	PI	TC	SHC	PI	TC	SHC	PI			
17.0	18.0	3.70	2.55	0.98	3.55	2.45	1.08	3.34	2.39	1.21	3.25	2.35	1.27	3.10	2.28	1.35	2.92	2.20	1.48
14.0	20.0	3.86	2.60	1.01	3.71	2.53	1.11	3.50	2.43	1.24	3.41	2.39	1.30	3.26	2.32	1.39	3.08	2.23	1.50
16.0	22.0	4.02	2.63	1.04	3.87	2.56	1.13	3.66	2.46	1.26	3.57	2.42	1.32	3.42	2.35	1.42	3.24	2.27	1.53
18.0	25.0	4.17	2.66	1.06	4.02	2.59	1.16	3.81	2.50	1.29	3.72	2.45	1.35	3.57	2.38	1.44	3.39	2.30	1.56
19.0	27.0	4.25	2.68	1.08	4.10	2.61	1.17	3.89	2.51	1.30	3.80	2.47	1.36	3.65	2.40	1.46	3.47	2.32	1.57
22.0	30.0	4.48	2.73	1.11	4.33	2.66	1.21	4.12	2.56	1.34	4.03	2.52	1.40	3.88	2.45	1.49	3.70	2.37	1.61
24.0	32.0	4.64	2.77	1.14	4.49	2.70	1.24	4.28	2.60	1.37	4.19	2.56	1.43	4.04	2.49	1.52	3.85	2.40	1.63

- SYMBOLS**
- AFR: Air flow rate (m³/min)
 - BF: Bypass factor
 - EWB: Entering wet bulb temp. (°CWB)
 - EDB: Entering dry bulb temp. (°CDB)
 - TC: Total cooling capacity (kW)
 - SHC: Sensible heating capacity (kW)
 - PI: Power input (comp. indoor+outdoor fan motor)
- NOTES**
- Ratings shown are net capacities which include a deduction for indoor fan motor heat.
 - Shows nominal capacities.
 - SHC is based on each EWB and EDB.
SHC* = SHC correction for other dry bulb
SHC* = 0.34 x 60 x AFR (m³/min) x DB-EDB/1000.
Add SHC* to SHC if SHC > TC, then TC equal SHC.
 - Direct interpolation is permissible Do not extrapolate.